



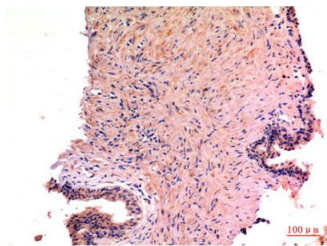
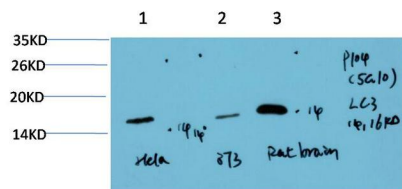
LC3A

Mouse monoclonal Antibody

#55262

Catalog Number: 55262**Amount:** 100µg/100µl**Swiss-Prot No. :** Q9H492**GENE ID:** 84557**Form of Antibody:** Purified mouse monoclonal in buffer containing 0.1M Tris-Glycine (pH 7.4, 150 mM NaCl) with 0.2% sodium azide, 50% glycerol**Storage/Stability:** Store at -20°C/1 year**Purification:** affinity-chromatography**Specificity/Sensitivity:** This antibody detects endogenous levels of LC3A and does not cross-react with related proteins**AlternativeNames:** Microtubule-associated proteins 1A/1B light chain 3A (Autophagy-related protein LC3 A) (Autophagy-related ubiquitin-like modifier LC3 A) (MAP1 light chain 3-like protein 1) (MAP1A/MAP1B light chain 3 A) (MAP1A/MAP1B LC3 A) (Microtubule-associated protein**Reactivity:** Human, Mouse, Rat**Applications:**

Predicted MW: 14, 16 WB: 1:1000-2000 IHC: 1:50-200 IF: 1:200



Immunohistochemical analysis of paraffin-embedded Human Prostate Carcinoma Tissue

Background: