



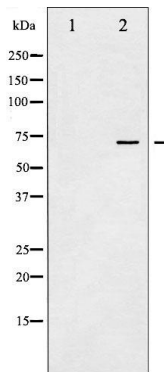
## SHP-2 (Phospho-Tyr580) Antibody

#14211

**Catalog Number:** 14211-1, 14211-2**Amount:** 50µg/50µl, 100µg/100µl**Swiss-Prot No. :** Q06124**Form of Antibody:** Rabbit IgG in phosphate buffered saline (without Mg<sup>2+</sup> and Ca<sup>2+</sup>), pH 7.4, 150mM NaCl, 0.02% sodium azide and 50% glycerol.**Storage/Stability:** Store at -20°C/1 year**Immunogen:** The antiserum was produced against synthesized phosphopeptide derived from Human SHP-2 around the phosphorylation site of Tyrosine 580**Purification:** The antibody was affinity-purified from rabbit antiserum by affinity-chromatography using epitope-specific immunogen.**Specificity/Sensitivity:** SHP-2(Phospho-Tyr580)Antibody detects endogenous levels of SHP-2 only when phosphorylated at Tyrosine 580**Reactivity:** Human, Mouse, Rat**Applications:**

Predicted MW: 70kd

WB: 1:500~1:2000 IHC: 1:50-200



Western blot analysis of SHP-2

phosphorylation expression in A431

whole cell lysates, The lane on the left is treated with the antigen-specific peptide.

**Background :**

SHP-2 is a SH2-containing ubiquitously expressed tyrosine-specific protein phosphatase. It participates in signaling events downstream of receptors for growth factors, cytokines, hormones, antigens and extracellular matrices in the control of cell growth, differentiation, migration, and death.