



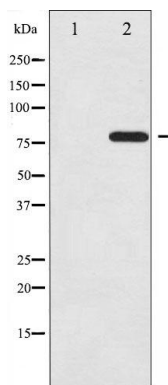
## Rel (Phospho-Ser503) Antibody

#14209

**Catalog Number:** 14209-1, 14209-2**Amount:** 50µg/50µl, 100µg/100µl**Swiss-Prot No. :** Q04864**Form of Antibody:** Rabbit IgG in phosphate buffered saline (without Mg<sup>2+</sup> and Ca<sup>2+</sup>), pH 7.4, 150mM NaCl, 0.02% sodium azide and 50% glycerol.**Storage/Stability:** Store at -20°C/1 year**Immunogen:** The antiserum was produced against synthesized phosphopeptide derived from Human Rel around the phosphorylation site of Serine503**Purification:** The antibody was affinity-purified from rabbit antiserum by affinity-chromatography using epitope-specific immunogen.**Specificity/Sensitivity:** Rel(Phospho-Ser503)Antibody detects endogenous levels of Rel only when phosphorylated at Serine503**Reactivity:** Human**Applications:**

Predicted MW: 70kd

WB:1:500~1:2000 IHC:1:50-200



Western blot analysis of Rel

phosphorylation expression in

MDA-MB-435 whole cell lysates, The

lane on the left is treated with the

antigen-specific peptide.

**Background :**

REL a proto-oncogenic transcription factor of the nuclear factor-kappaB (NFkB) group. There are five NFkB proteins in mammals (RelA/NFkB-p65, RelB, c-Rel, NF- $\kappa$ B1/NFkB-p105, and NF- $\kappa$ B2/NFkB-p100).