



## m-TOR (Phospho-Ser2481) Antibody

#14202

**Catalog Number:** 14202-1, 14202-2

**Amount:** 50µg/50µl, 100µg/100µl

**Swiss-Prot No. :** P42345

**Form of Antibody:** Rabbit IgG in phosphate buffered saline (without Mg<sup>2+</sup> and Ca<sup>2+</sup>), pH 7.4, 150mM NaCl, 0.02% sodium azide and 50% glycerol.

**Storage/Stability:** Store at -20°C/1 year

**Immunogen:** The antiserum was produced against synthesized phosphopeptide derived from Human m-TOR around the phosphorylation site of Serine2481

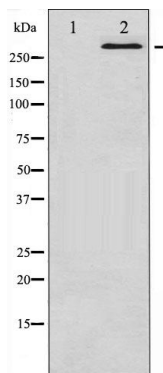
**Purification:** The antibody was affinity-purified from rabbit antiserum by affinity-chromatography using epitope-specific immunogen.

**Specificity/Sensitivity:** m-TOR(Phospho-Ser2481)Antibody detects endogenous levels of m-TOR only when phosphorylated at Serine2481

**Reactivity:** Human, Mouse, Rat

### Applications:

Predicted MW: 289kd      WB: 1:500~1:2000      IHC: 1:50-200



Western blot analysis of mTOR phosphorylation expression in HeLa whole cell lysates. The lane on the left is treated with the antigen-specific peptide.

**Background :** an atypical kinase belonging to the PIKK family of kinases. Controls cell growth through protein synthesis regulation. Downstream of PI3K/Akt pathway and required for cell survival. Acts as the target for the cell-cycle arrest and immunosuppressive effects of the FKBP12-rapamycin complex.