

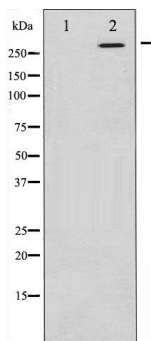


m-TOR (Phospho-Ser2448) Antibody

#14201

Catalog Number: 14201-1, 14201-2**Amount:** 50µg/50µl, 100µg/100µl**Swiss-Prot No. :** P42345**Form of Antibody:** Rabbit IgG in phosphate buffered saline (without Mg²⁺ and Ca²⁺), pH 7.4, 150mM NaCl, 0.02% sodium azide and 50% glycerol.**Storage/Stability:** Store at -20°C/1 year**Immunogen:** The antiserum was produced against synthesized phosphopeptide derived from Human m-TOR around the phosphorylation site of Serine2448**Purification:** The antibody was affinity-purified from rabbit antiserum by affinity-chromatography using epitope-specific immunogen.**Specificity/Sensitivity:** m-TOR(Phospho-Ser2448)Antibody detects endogenous levels of m-TOR only when phosphorylated at Serine2448**Reactivity:** Human, Mouse, Rat**Applications:**

Predicted MW: 289kd WB: 1:500~1:2000 IHC: 1:50-200



Western blot analysis of mTOR
phosphorylation expression in EGF
treated HeLa whole cell lysates. The
lane on the left is treated with the
antigen-specific peptide.

Background : an atypical kinase belonging to the PIKK family of kinases. Controls cell growth through protein synthesis regulation. Downstream of PI3K/Akt pathway and required for cell survival. Acts as the target for the cell-cycle arrest and immunosuppressive effects of the FKBP12-rapamycin complex.