



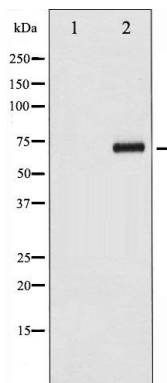
## CDC25A (Phospho-Ser124) Antibody

#14193

**Catalog Number:** 14193-1, 14193-2**Amount:** 50µg/50µl, 100µg/100µl**Swiss-Prot No. :** P30304**Form of Antibody:** Rabbit IgG in phosphate buffered saline (without Mg<sup>2+</sup> and Ca<sup>2+</sup>), pH 7.4, 150mM NaCl, 0.02% sodium azide and 50% glycerol.**Storage/Stability:** Store at -20°C/1 year**Immunogen:** The antiserum was produced against synthesized phosphopeptide derived from Human CDC25A around the phosphorylation site of Serine124**Purification:** The antibody was affinity-purified from rabbit antiserum by affinity-chromatography using epitope-specific immunogen.**Specificity/Sensitivity:** Phospho-CDC25A (Ser124) Antibody detects endogenous levels of CDC25A only when phosphorylated at Serine124**Reactivity:** Human, Mouse, Rat**Applications:**

Predicted MW: 70kd

WB: 1:500~1:2000



Western blot analysis of CDC25A

phosphorylation expression in UV

treated 293 whole cell lysates, The lane

on the left is treated with the

antigen-specific peptide.

**Background :**

CDC25A is a member of the CDC25 family of phosphatases. CDC25A is required for progression from G1 to the S phase of the cell cycle. It activates the cyclin-dependent kinase CDC2 by removing two phosphate groups.