

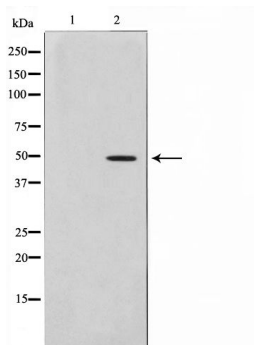


PLCH Antibody

#24340

Catalog Number: 24340-1, 24340-2**Amount:** 50µg/50µl, 100µg/100µl**Swiss-Prot No. :** Q53EU6**Form of Antibody:** Rabbit IgG in phosphate buffered saline (without Mg²⁺ and Ca²⁺), pH 7.4, 150mM NaCl, 0.02% sodium azide and 50% glycerol.**Storage/Stability:** Store at -20°C/1 year**Immunogen:** The antiserum was produced against synthesized peptide derived from Human PLCH**Purification:** The antibody was affinity-purified from rabbit antiserum by affinity-chromatography using epitope-specific immunogen.**Specificity/Sensitivity:** PLCH Antibody detects endogenous levels of total PLCH**Reactivity:** Human, Mouse, Rat**Applications:**

Predicted MW: 48kd WB: 1:500-2000



Western blot analysis on Jurkat cell lysate using PLCH Antibody

Background :

AGPAT9 Esterifies acyl-group from acyl-ACP to the sn-1 position of glycerol-3-phosphate, an essential step in glycerolipid biosynthesis. Overexpression activates the mTOR pathway. Belongs to the 1-acyl-sn-glycerol-3-phosphate acyltransferase family.