



RIPK2 (Phospho-Ser176) Antibody

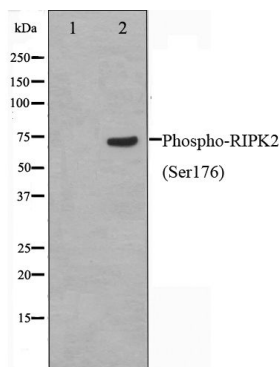
#14138

Catalog Number: 14138-1, 14138-2**Amount:** 50µg/50µl, 100µg/100µl**Swiss-Prot No. :** O43353**Form of Antibody:** Rabbit IgG in phosphate buffered saline (without Mg²⁺ and Ca²⁺), pH 7.4, 150mM NaCl, 0.02% sodium azide and 50% glycerol.**Storage/Stability:** Store at -20°C/1 year**Immunogen:** The antiserum was produced against synthesized phosphopeptide derived from Human RIPK2 around the phosphorylation site of Sersine 176**Purification:** The antibody was affinity-purified from rabbit antiserum by affinity-chromatography using epitope-specific immunogen.**Specificity/Sensitivity:** Phospho-RIPK2 (Ser176) Antibody detects endogenous levels of RIPK2 only when phosphorylated at Sersine 176**Reactivity:** Human, Mouse, Rat**Applications:**

Predicted MW: 70kd

WB: 1:500~1:2000

IHC: 1:50-200



Western blot analysis on 293 cell lysate using
Phospho-RIPK2(Ser176) Antibody

Background :

RIPK2 a tyrosine kinase-like kinase of the RIPK family. Activates pro-caspase-1 and pro-caspase-8. Potentiates casp-8-mediated apoptosis. May activate NF-kappaB.