



FER (Phospho-Tyr402) Antibody

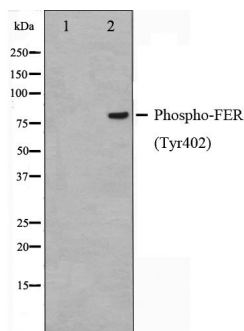
#14135

Catalog Number: 14135-1, 14135-2**Amount:** 50µg/50µl, 100µg/100µl**Swiss-Prot No. :** P16591**Form of Antibody:** Rabbit IgG in phosphate buffered saline (without Mg²⁺ and Ca²⁺), pH 7.4, 150mM NaCl, 0.02% sodium azide and 50% glycerol.**Storage/Stability:** Store at -20°C/1 year**Immunogen:** The antiserum was produced against synthesized phosphopeptide derived from Human FER around the phosphorylation site of Tyrosine 402**Purification:** The antibody was affinity-purified from rabbit antiserum by affinity-chromatography using epitope-specific immunogen.**Specificity/Sensitivity:** Phospho-FER (Tyr402) Antibody detects endogenous levels of FER only when phosphorylated at Tyrosine 402**Reactivity:** Human, Mouse, Rat**Applications:**

Predicted MW: 85kd

WB: 1:500~1:2000

IHC: 1:50-200



Western blot analysis on Jurkat cell lysate using
Phospho-FER(Tyr402) Antibody

Background :

Fer protein is a member of the FPS/FES family of nontransmembrane receptor tyrosine kinases. It regulates cell-cell adhesion and mediates signaling from the cell surface to the cytoskeleton via growth factor receptors.