



PECAM1 Antibody

#24334

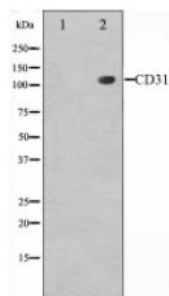
Catalog Number: 24334-1, 24334-2**Amount:** 50µg/50µl, 100µg/100µl**Swiss-Prot No. :** P16284**Form of Antibody:** Rabbit IgG in phosphate buffered saline (without Mg²⁺ and Ca²⁺), pH 7.4, 150mM NaCl, 0.02% sodium azide and 50% glycerol.**Storage/Stability:** Store at -20°C/1 year**Immunogen:** The antiserum was produced against synthesized peptide derived from Human PECAM1**Purification:** The antibody was affinity-purified from rabbit antiserum by affinity-chromatography using epitope-specific immunogen.**Specificity/Sensitivity:** PECAM1 Antibody detects endogenous levels of total PECAM1**Reactivity:** Human, Mouse, Rat**Applications:**

Predicted MW: 82kd

WB: 1:500-2000

IHC: 1:50-200

IF/ICC: 1:100-500



Western blot analysis on Jurkat cell lysate using PECAM-1 antibody. The lane on the left is treated with the antigen-specific peptide.

Background : PECAM-1 a cell adhesion molecule expressed on platelets and at endothelial cell intercellular junctions. Plays a role in modulation of integrin-mediated cell adhesion, transendothelial migration, angiogenesis, apoptosis, cell migration, negative regulation of immune cell signaling, autoimmunity, macrophage phagocytosis, IgE-mediated anaphylaxis and thrombosis. Undergoes alternative splicing, generating multiple isoforms in vascular beds of various tissues.

www.swbio.com

Order : order@swbio.com

Technical : tech@swbio.com
