



GRM8 Antibody

#24329

Catalog Number: 24329-1, 24329-2

Amount: 50µg/50µl, 100µg/100µl

Swiss-Prot No. : O00222

Form of Antibody: Rabbit IgG in phosphate buffered saline (without Mg²⁺ and Ca²⁺), pH 7.4, 150mM NaCl, 0.02% sodium azide and 50% glycerol.

Storage/Stability: Store at -20°C/1 year

Immunogen: The antiserum was produced against synthesized peptide derived from Human GRM8

Purification: The antibody was affinity-purified from rabbit antiserum by affinity-chromatography using epitope-specific immunogen.

Specificity/Sensitivity: GRM8 Antibody detects endogenous levels of total GRM8

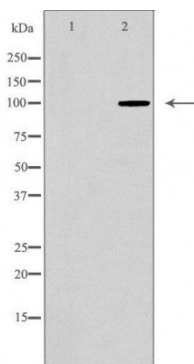
Reactivity: Human, Mouse, Rat

Applications:

Predicted MW: 102kd

WB: 1:500-2000

IHC: 1:50-200



Western blot analysis of extracts of mouse brain tissue, using GRM8 antibody. Immunohistochemistry of paraffin-embedded human ovarian cancer using GRM8 antibody.

Background : L-glutamate is the major excitatory neurotransmitter in the central nervous system and activates both ionotropic and metabotropic glutamate receptors. Glutamatergic neurotransmission is involved in most aspects of normal brain function and can be perturbed in many neuropathologic conditions. The metabotropic glutamate receptors are a family of G protein-coupled receptors, that have been divided into 3 groups on the basis of sequence homology, putative signal transduction mechanisms, and pharmacologic properties. Group I includes GRM1 and GRM5 and these receptors have been shown to activate phospholipase C. Group II includes GRM2 and GRM3 while Group III includes GRM4, GRM6, GRM7 and GRM8. Group II and III receptors are linked to the inhibition of the cyclic AMP cascade but differ in their agonist selectivities.