



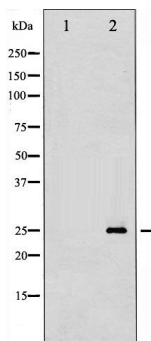
p27 Kip1 (Phospho-Ser10) Antibody

#14176

Catalog Number: 14176-1, 14176-2**Amount:** 50µg/50µl, 100µg/100µl**Swiss-Prot No. :** P46527**Form of Antibody:** Rabbit IgG in phosphate buffered saline (without Mg²⁺ and Ca²⁺), pH 7.4, 150mM NaCl, 0.02% sodium azide and 50% glycerol.**Storage/Stability:** Store at -20°C/1 year**Immunogen:** The antiserum was produced against synthesized phosphopeptide derived from Human p27 Kip1 around the phosphorylation site of Serine 10**Purification:** The antibody was affinity-purified from rabbit antiserum by affinity-chromatography using epitope-specific immunogen.**Specificity/Sensitivity:** Phospho-p27 Kip1(Ser 10)Antibody detects endogenous levels of p27 Kip1 only when phosphorylated at Serine 10**Reactivity:** Human, Mouse, Rat**Applications:**

Predicted MW: 27kd

WB: 1:500~1:2000



Western blot analysis of p27 Kip1 phosphorylation expression in A2780 whole cell lysates. The lane on the left is treated with the antigen-specific peptide.

Background :

This gene encodes a cyclin-dependent kinase inhibitor, which shares a limited similarity with CDK inhibitor CDKN1A/p21. The encoded protein binds to and prevents the activation of cyclin E-CDK2 or cyclin D-CDK4 complexes, and thus controls the cell cycle progression at G1.