



GABRB2 Antibody

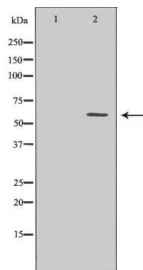
#24326

Catalog Number: 24326-1, 24326-2**Amount:** 50µg/50µl, 100µg/100µl**Swiss-Prot No. :** P47870**Form of Antibody:** Rabbit IgG in phosphate buffered saline (without Mg²⁺ and Ca²⁺), pH 7.4, 150mM NaCl, 0.02% sodium azide and 50% glycerol.**Storage/Stability:** Store at -20°C/1 year**Immunogen:** The antiserum was produced against synthesized peptide derived from Human GABRB2**Purification:** The antibody was affinity-purified from rabbit antiserum by affinity-chromatography using epitope-specific immunogen.**Specificity/Sensitivity:** GABRB2 Antibody detects endogenous levels of total GABRB2**Reactivity:** Human, Mouse, Rat**Applications:**

Predicted MW: 59kd

WB: 1:500-2000

IHC: 1:50-200



Western blot analysis of extracts of mouse liver, using GABRB2 antibody.

Background :

The gamma-aminobutyric acid (GABA) A receptor is a multisubunit chloride channel that mediates the fastest inhibitory synaptic transmission in the central nervous system. This gene encodes GABA A receptor, beta 2 subunit. It is mapped to chromosome 5q34 in a cluster comprised of genes encoding alpha 1 and gamma 2 subunits of the GABA A receptor. Alternative splicing of this gene generates 2 transcript variants, differing by a 114 bp insertion.