



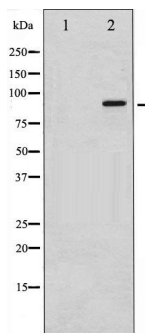
## p95/NBS1 (Phospho-Ser343) Antibody

#14151

**Catalog Number:** 14151-1, 14151-2**Amount:** 50µg/50µl, 100µg/100µl**Swiss-Prot No. :** O60934**Form of Antibody:** Rabbit IgG in phosphate buffered saline (without Mg<sup>2+</sup> and Ca<sup>2+</sup>), pH 7.4, 150mM NaCl, 0.02% sodium azide and 50% glycerol.**Storage/Stability:** Store at -20°C/1 year**Immunogen:** The antiserum was produced against synthesized phosphopeptide derived from Human p95/NBS1 around the phosphorylation site of Serine 343**Purification:** The antibody was affinity-purified from rabbit antiserum by affinity-chromatography using epitope-specific immunogen.**Specificity/Sensitivity:** Phospho-p95/NBS1 (Ser343) Antibody detects endogenous levels of p95/NBS1 only when phosphorylated at Serine 343**Reactivity:** Human, Mouse, Rat**Applications:**

Predicted MW: 95kd

WB: 1:500~1:2000



Western blot analysis of p95/NBS1 phosphorylation expression in Jurkat whole cell lysates. The lane on the left is treated with the antigen-specific peptide.

**Background :**

NBS1 is a member of the MRE11/RAD50 double-strand break repair complex. Involved in DNA double-strand break repair and DNA damage-induced checkpoint activation. Mutation results in the Nijmegen breakage syndrome (NBS), an autosomal recessive chromosomal instability syndrome.