



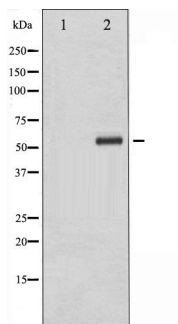
ChK1 (Phospho-Ser286) Antibody

#14148

Catalog Number: 14148-1, 14148-2**Amount:** 50µg/50µl, 100µg/100µl**Swiss-Prot No. :** O14757**Form of Antibody:** Rabbit IgG in phosphate buffered saline (without Mg²⁺ and Ca²⁺), pH 7.4, 150mM NaCl, 0.02% sodium azide and 50% glycerol.**Storage/Stability:** Store at -20°C/1 year**Immunogen:** The antiserum was produced against synthesized phosphopeptide derived from Human ChK1 around the phosphorylation site of Serine 286**Purification:** The antibody was affinity-purified from rabbit antiserum by affinity-chromatography using epitope-specific immunogen.**Specificity/Sensitivity:** Phospho-ChK1 (Ser286) Antibody detects endogenous levels of ChK1 only when phosphorylated at Serine 286**Reactivity:** Human**Applications:**

Predicted MW: 55kd

WB: 1:500~1:2000 IHC: 1:50-200



Western blot analysis of Chk1 phosphorylation expression in Na₃VO₄ treated K562 whole cell lysates. The lane on the left is treated with the antigen-specific peptide.

Background :

DNA damage induced protein phosphorylation; regulation of mitotic centrosome separation; regulation of S phase; peptidyl-threonine phosphorylation; DNA repair; chromatin-mediated maintenance of transcription; negative regulation of mitosis;