



## GRIA1 Antibody

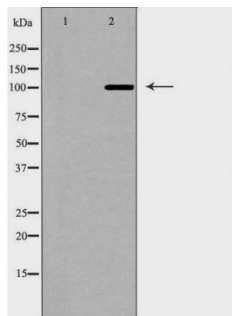
#24325

**Catalog Number:** 24325-1, 24325-2**Amount:** 50µg/50µl, 100µg/100µl**Swiss-Prot No. :** P42261**Form of Antibody:** Rabbit IgG in phosphate buffered saline (without Mg<sup>2+</sup> and Ca<sup>2+</sup>), pH 7.4, 150mM NaCl, 0.02% sodium azide and 50% glycerol.**Storage/Stability:** Store at -20°C/1 year**Immunogen:** The antiserum was produced against synthesized peptide derived from Human GRIA1**Purification:** The antibody was affinity-purified from rabbit antiserum by affinity-chromatography using epitope-specific immunogen.**Specificity/Sensitivity:** GRIA1 Antibody detects endogenous levels of total GRIA1**Reactivity:** Human, Mouse, Rat**Applications:**

Predicted MW: 105kd

WB: 1:500-2000

IHC: 1:50-200



Western blot analysis of extracts of Rat brain cell line, using GRIA1 antibody.

**Background :** Glutamate receptors are the predominant excitatory neurotransmitter receptors in the mammalian brain and are activated in a variety of normal neurophysiologic processes. These receptors are heteromeric protein complexes with multiple subunits, each possessing transmembrane regions, and all arranged to form a ligand-gated ion channel. The classification of glutamate receptors is based on their activation by different pharmacologic agonists. This gene belongs to a family of alpha-amino-3-hydroxy-5-methyl-4-isoxazole propionate (AMPA) receptors. Alternatively spliced transcript variants encoding different isoforms have been found for this gene.

[www.swbio.com](http://www.swbio.com)

**Order :** [order@swbio.com](mailto:order@swbio.com)

**Technical :** [tech@swbio.com](mailto:tech@swbio.com)

---