



## GABRG2 Antibody

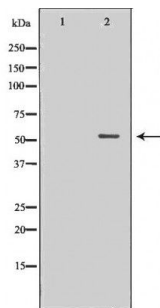
#24322

**Catalog Number:** 24322-1, 24322-2**Amount:** 50µg/50µl, 100µg/100µl**Swiss-Prot No. :** P18507**Form of Antibody:** Rabbit IgG in phosphate buffered saline (without Mg<sup>2+</sup> and Ca<sup>2+</sup>), pH 7.4, 150mM NaCl, 0.02% sodium azide and 50% glycerol.**Storage/Stability:** Store at -20°C/1 year**Immunogen:** The antiserum was produced against synthesized peptide derived from Human GABRG2**Purification:** The antibody was affinity-purified from rabbit antiserum by affinity-chromatography using epitope-specific immunogen.**Specificity/Sensitivity:** GABRG2 Antibody detects endogenous levels of total GABRG2**Reactivity:** Human, Mouse, Rat**Applications:**

Predicted MW: 55kd

WB: 1:500-2000

IHC: 1:50-200



Western blot analysis of extracts of brain cell lines, using GABRG2 antibody.

**Background :**

This gene encodes a gamma-aminobutyric acid (GABA) receptor. GABA is the major inhibitory neurotransmitter in the mammalian brain, where it acts at GABA-A receptors, which are ligand-gated chloride channels. GABA-A receptors are pentameric, consisting of proteins from several subunit classes: alpha, beta, gamma, delta and rho. Mutations in this gene have been associated with epilepsy and febrile seizures. Multiple transcript variants encoding different isoforms have been identified for this gene.