

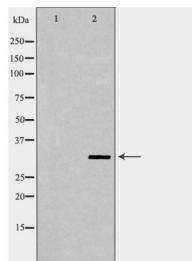


F11R Antibody

#24303

Catalog Number: 24303-1, 24303-2**Amount:** 50µg/50µl, 100µg/100µl**Swiss-Prot No. :** Q9Y624**Form of Antibody:** Rabbit IgG in phosphate buffered saline (without Mg²⁺ and Ca²⁺), pH 7.4, 150mM NaCl, 0.02% sodium azide and 50% glycerol.**Storage/Stability:** Store at -20°C/1 year**Immunogen:** The antiserum was produced against synthesized peptide derived from Human F11R**Purification:** The antibody was affinity-purified from rabbit antiserum by affinity-chromatography using epitope-specific immunogen.**Specificity/Sensitivity:** F11R Antibody detects endogenous levels of total F11R**Reactivity:** Human, Mouse, Rat**Applications:**

Predicted MW: 33kd WB: 1:500-2000 IHC: 1:50-200



Western blot analysis of HeLa cell lysate using F11R antibody.

Background :

Tight junctions represent one mode of cell-to-cell adhesion in epithelial or endothelial cell sheets, forming continuous seals around cells and serving as a physical barrier to prevent solutes and water from passing freely through the paracellular space. The protein encoded by this immunoglobulin superfamily gene member is an important regulator of tight junction assembly in epithelia. In addition, the encoded protein can act as a receptor for reovirus, a ligand for the integrin LFA1, involved in leukocyte transmigration, and a platelet receptor. Multiple 5' alternatively spliced variants, encoding the same protein, have been identified but their biological validity has not been established.