

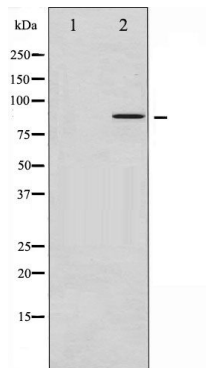


## FRS2 Antibody

#24295

**Catalog Number:** 24295-1, 24295-2**Amount:** 50µg/50µl, 100µg/100µl**Swiss-Prot No. :** Q8WU20**Form of Antibody:** Rabbit IgG in phosphate buffered saline (without Mg<sup>2+</sup> and Ca<sup>2+</sup>), pH 7.4, 150mM NaCl, 0.02% sodium azide and 50% glycerol.**Storage/Stability:** Store at -20°C/1 year**Immunogen:** The antiserum was produced against synthesized peptide derived from Human FRS2**Purification:** The antibody was affinity-purified from rabbit antiserum by affinity-chromatography using epitope-specific immunogen.**Specificity/Sensitivity:** FRS2 Antibody detects endogenous levels of total FRS2**Reactivity:** Human, Mouse, Rat**Applications:**

Predicted MW: 85kd WB: 1:500-2000



Western blot analysis of FRS2 expression in HUVEC whole cell lysates. The lane on the left is treated with the antigen-specific peptide.

**Background :**

FRS2 is an adaptor protein involved in fibroblast growth factor receptor (FGFR) signaling. Plays an important role in linking FGFR and nerve growth factor receptors with Ras/MAPK signaling pathways.