

**Signalway****EFNB1****Antibody**

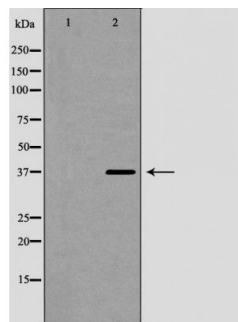
#24287

Catalog Number: 24287-1, 24287-2**Amount:** 50µg/50µl, 100µg/100µl**Swiss-Prot No. :** P98172**Form of Antibody:** Rabbit IgG in phosphate buffered saline (without Mg²⁺ and Ca²⁺), pH 7.4, 150mM NaCl, 0.02% sodium azide and 50% glycerol.**Storage/Stability:** Store at -20°C/1 year**Immunogen:** The antiserum was produced against synthesized peptide derived from Human EFNB1**Purification:** The antibody was affinity-purified from rabbit antiserum by affinity-chromatography using epitope-specific immunogen.**Specificity/Sensitivity:** EFNB1 Antibody detects endogenous levels of total EFNB1**Reactivity:** Human, Mouse, Rat**Applications:**

Predicted MW: 38kd

WB: 1:500-2000

IHC: 1:50-200



Western blot analysis of extracts of various cell lines, using EFNB1 antibody.

Background :

The protein encoded by this gene is a type I membrane protein and a ligand of Eph-related receptor tyrosine kinases. It may play a role in cell adhesion and function in the development or maintenance of the nervous system.