



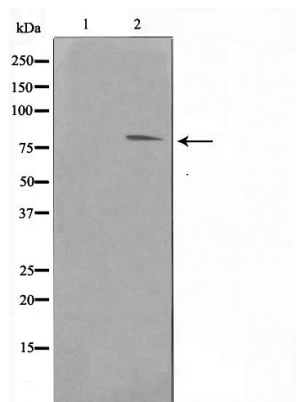
FER

Antibody

#24292

Catalog Number: 24292-1, 24292-2**Amount:** 50µg/50µl, 100µg/100µl**Swiss-Prot No. :** P16591**Form of Antibody:** Rabbit IgG in phosphate buffered saline (without Mg²⁺ and Ca²⁺), pH 7.4, 150mM NaCl, 0.02% sodium azide and 50% glycerol.**Storage/Stability:** Store at -20°C/1 year**Immunogen:** The antiserum was produced against synthesized peptide derived from Human FER**Purification:** The antibody was affinity-purified from rabbit antiserum by affinity-chromatography using epitope-specific immunogen.**Specificity/Sensitivity:** FER Antibody detects endogenous levels of total FER**Reactivity:** Human, Mouse, Rat**Applications:**

Predicted MW: 85kd WB: 1:500-2000



Western blot analysis on Jurkat cell lysate using FER Antibody

Background :

Fer protein is a member of the FPS/FES family of nontransmembrane receptor tyrosine kinases. It regulates cell-cell adhesion and mediates signaling from the cell surface to the cytoskeleton via growth factor receptors.