



CDH23 Antibody

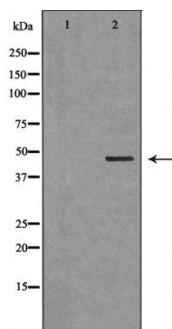
#24245

Catalog Number: 24245-1, 24245-2**Amount:** 50µg/50µl, 100µg/100µl**Swiss-Prot No. :** Q9H251**Form of Antibody:** Rabbit IgG in phosphate buffered saline (without Mg²⁺ and Ca²⁺), pH 7.4, 150mM NaCl, 0.02% sodium azide and 50% glycerol.**Storage/Stability:** Store at -20°C/1 year**Immunogen:** The antiserum was produced against synthesized peptide derived from Human CDH23**Purification:** The antibody was affinity-purified from rabbit antiserum by affinity-chromatography using epitope-specific immunogen.**Specificity/Sensitivity:** CDH23 Antibody detects endogenous levels of total CDH23**Reactivity:** Human, Mouse, Rat**Applications:**

Predicted MW: 45kd

WB: 1:500-2000

IHC: 1:50-200



Western blot analysis of extracts of Mouse brain?, using CDH23 antibody | Immunohistochemistry of paraffin-embedded human lung cancer tissue using CDH23 Antibody.

Background :

This gene is a member of the cadherin superfamily, whose genes encode calcium dependent cell-cell adhesion glycoproteins. The encoded protein is thought to be involved in stereocilia organization and hair bundle formation. The gene is located in a region containing the human deafness loci DFNB12 and USH1D. Usher syndrome 1D and nonsyndromic autosomal recessive deafness DFNB12 are caused by allelic mutations of this cadherin-like gene. Alternative splice variants encoding different isoforms have been described