



STAT5A/B (Phospho-Ser725/730) Antibody

#14111

Catalog Number: 14111-1, 14111-2

Amount: 50µg/50µl, 100µg/100µl

Swiss-Prot No. : P42229/P51692

Form of Antibody: Rabbit IgG in phosphate buffered saline (without Mg²⁺ and Ca²⁺), pH 7.4, 150mM NaCl, 0.02% sodium azide and 50% glycerol.

Storage/Stability: Store at -20°C/1 year

Immunogen: The antiserum was produced against synthesized phosphopeptide derived from Human STAT5A/B around the phosphorylation site of Serine 725/730

Purification: The antibody was affinity-purified from rabbit antiserum by affinity-chromatography using epitope-specific immunogen.

Specificity/Sensitivity: STAT5A/B (Phospho-Ser725/730) Antibody detects endogenous levels of STAT5A/B only when phosphorylated at Serine 725/730

Reactivity: Human, Mouse, Rat

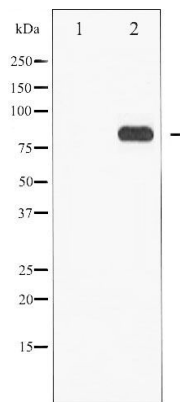
Applications:

redicted MW: 90kd

WB:1:500~1:2000

IHC:1:50-200

IF/ICC:1:100-500



Western blot analysis of STAT5A/B phosphorylation expression in EGF treated Jurkat whole cell lysates, The lane on the left is treated with the antigen-specific peptide.

Background :

STAT5B transcription factor of the STAT family. Phosphorylated and activated by receptor-associated kinases triggered by cytokines including IL2, IL3, GM-CSF, and various growth hormones. It has been shown to be involved in diverse biological processes, such as TCR signaling, apoptosis, adult mammary gland development, and sexual dimorphism of liver gene expression.