



STAT6 (Phospho-Tyr641) Antibody

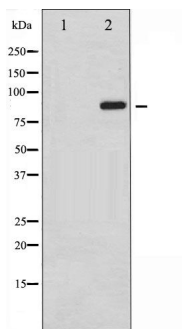
#14107

Catalog Number: 14107-1, 14107-2**Amount:** 50µg/50µl, 100µg/100µl**Swiss-Prot No. :** P42226**Form of Antibody:** Rabbit IgG in phosphate buffered saline (without Mg²⁺ and Ca²⁺), pH 7.4, 150mM NaCl, 0.02% sodium azide and 50% glycerol.**Storage/Stability:** Store at -20°C/1 year**Immunogen:** The antiserum was produced against synthesized phosphopeptide derived from Human STAT6 around the phosphorylation site of Tyrosine 641**Purification:** The antibody was affinity-purified from rabbit antiserum by affinity-chromatography using epitope-specific immunogen.**Specificity/Sensitivity:** STAT6 (Phospho-Tyr641) Antibody detects endogenous levels of STAT6 only when phosphorylated at Tyrosine 641**Reactivity:** Human, Mouse, Rat**Applications:**

Predicted MW: 94kd

WB: 1:500~1:2000

IHC: 1:50-200



Western blot analysis of STAT6 phosphorylation expression in IL-4 treated HeLa whole cell lysates. The lane on the left is treated with the antigen-specific peptide.

Background :

STAT6 transcription factor of the STAT family. Plays a central role in IL4-mediated biological responses. Induces the expression of BCL2L1/BCL-X(L), which is responsible for the anti-apoptotic activity of IL4.