

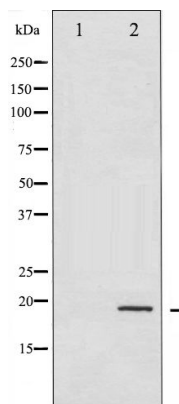


Stathmin1 (Phospho-Ser24) Antibody

#14105

Catalog Number: 14105-1, 14105-2**Amount:** 50µg/50µl, 100µg/100µl**Swiss-Prot No. :** P16949**Form of Antibody:** Rabbit IgG in phosphate buffered saline (without Mg²⁺ and Ca²⁺), pH 7.4, 150mM NaCl, 0.02% sodium azide and 50% glycerol.**Storage/Stability:** Store at -20°C/1 year**Immunogen:** The antiserum was produced against synthesized phosphopeptide derived from Human Stathmin 1 around the phosphorylation site of Serine 24**Purification:** The antibody was affinity-purified from rabbit antiserum by affinity-chromatography using epitope-specific immunogen.**Specificity/Sensitivity:** Stathmin 1 (Phospho-Ser24) Antibody detects endogenous levels of Stathmin 1 only when phosphorylated at Serine 24**Reactivity:** Human, Mouse, Rat**Applications:**

Predicted MW: 19kd WB: 1:500~1:2000 IHC: 1:50-200



Western blot analysis of Stathmin 1 phosphorylation expression in PMA treated Jurkat whole cell lysates, The lane on the left is treated with the antigen-specific peptide.

Background :

This gene belongs to the stathmin family of genes. It encodes a ubiquitous cytosolic phosphoprotein proposed to function as an intracellular relay integrating regulatory signals of the cellular environment.