



BVES Antibody

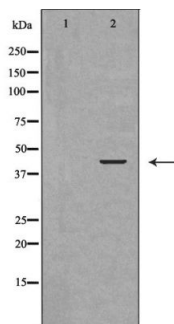
#24173

Catalog Number: 24173-1, 24173-2**Amount:** 50µg/50µl, 100µg/100µl**Swiss-Prot No. :** Q8NE79**Form of Antibody:** Rabbit IgG in phosphate buffered saline (without Mg²⁺ and Ca²⁺), pH 7.4, 150mM NaCl, 0.02% sodium azide and 50% glycerol.**Storage/Stability:** Store at -20°C/1 year**Immunogen:** The antiserum was produced against synthesized peptide derived from Human BVES**Purification:** The antibody was affinity-purified from rabbit antiserum by affinity-chromatography using epitope-specific immunogen.**Specificity/Sensitivity:** BVES antibody detects endogenous levels of total BVES protein**Reactivity:** Human, Mouse, Rat**Applications:**

Predicted MW: 41kd

WB: 1:500~1:2000

IHC: 1:50-200



Western blot analysis of extracts of various celllines, using BVES antibody.

Background :

This gene encodes a member of the POP family of proteins containing three putative transmembrane domains. This gene is expressed in cardiac and skeletal muscle and may play an important role in development of these tissues. The mouse ortholog may be involved in the regeneration of adult skeletal muscle and may act as a cell adhesion molecule in coronary vasculogenesis. Three transcript variants encoding the same protein have been found for this gene.