



AZI2

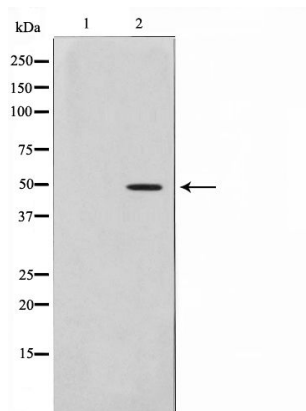
Antibody

#24136

Catalog Number: 24136-1, 24136-2**Amount:** 50µg/50µl, 100µg/100µl**Swiss-Prot No. :** Q9H6S1**Form of Antibody:** Rabbit IgG in phosphate buffered saline (without Mg²⁺ and Ca²⁺), pH 7.4, 150mM NaCl, 0.02% sodium azide and 50% glycerol.**Storage/Stability:** Store at -20°C/1 year**Immunogen:** The antiserum was produced against synthesized peptide derived from Human AZI2**Purification:** The antibody was affinity-purified from rabbit antiserum by affinity-chromatography using epitope-specific immunogen.**Specificity/Sensitivity:** AZI2 antibody detects endogenous levels of total AZI2 protein**Reactivity:** Human, Mouse, Rat**Applications:**

Predicted MW: 48kd

WB: 1:500~1:2000



Western blot analysis on HepG2 cell lysate using AZI2 Antibody

Background :

AZI2 Activates serine/threonine-protein kinase TBK1 and facilitates its oligomerization. Enhances the phosphorylation of NF-kappa-B p65 subunit RELA by TBK1. Promotes TBK1-induced as well as TNF-alpha or PMA-induced activation of NF-kappa-B. Participates in IFN-beta promoter activation via TICAM1. Interacts with IKBKE, TBK1 and TICAM1. 2 isoforms of the human protein are produced by alternative splicing.