



APAF1 Antibody

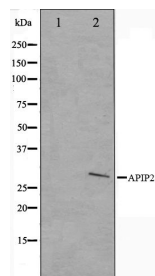
#24133

Catalog Number: 24133-1, 24133-2**Amount:** 50µg/50µl, 100µg/100µl**Swiss-Prot No. :** O14727-6**Form of Antibody:** Rabbit IgG in phosphate buffered saline (without Mg²⁺ and Ca²⁺), pH 7.4, 150mM NaCl, 0.02% sodium azide and 50% glycerol.**Storage/Stability:** Store at -20°C/1 year**Immunogen:** The antiserum was produced against synthesized peptide derived from Human APAF**Purification:** The antibody was affinity-purified from rabbit antiserum by affinity-chromatography using epitope-specific immunogen.**Specificity/Sensitivity:** APAF1 antibody detects endogenous levels of total APAF1 protein**Reactivity:** Human**Applications:**

Predicted MW: 27kd

WB: 1:500~1:2000

IHC: 1:50-200



Western blot analysis on COLO205 cell lysate using APAF1 Antibody

Background :

APAF Oligomeric Apaf-1 mediates the cytochrome c-dependent autocatalytic activation of pro-caspase-9 (Apaf-3), leading to the activation of caspase-3 and apoptosis. This activation requires ATP. Isoform 6 is less effective in inducing apoptosis. Induced by E2F and p53 in apoptotic neurons. Monomer. Oligomerizes upon binding of cytochrome c and dATP. Oligomeric Apaf-1 and pro-caspase-9 bind to each other via their respective NH₂-terminal CARD domains and consecutively mature caspase-9 is released from the complex. Pro-caspase-3 is recruited into the Apaf-1-pro-caspase-9 complex via interaction with pro-caspase-9. Interacts with AIP. 6 isoforms of the human protein are produced by alternative splicing.