



AKT2 (Phospho-Ser474) Antibody

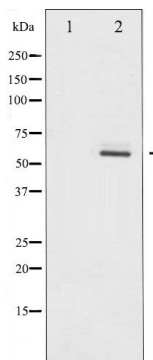
#14125

Catalog Number: 14125-1, 14125-2**Amount:** 50µg/50µl, 100µg/100µl**Swiss-Prot No. :** P31751**Form of Antibody:** Rabbit IgG in phosphate buffered saline (without Mg²⁺ and Ca²⁺), pH 7.4, 150mM NaCl, 0.02% sodium azide and 50% glycerol.**Storage/Stability:** Store at -20°C/1 year**Immunogen:** The antiserum was produced against synthesized phosphopeptide derived from Human AKT2 around the phosphorylation site of Serine 474**Purification:** The antibody was affinity-purified from rabbit antiserum by affinity-chromatography using epitope-specific immunogen.**Specificity/Sensitivity:** Phospho-AKT2 (Ser474) Antibody detects endogenous levels of AKT2 only when phosphorylated at Serine 474**Reactivity:** Human, Mouse, Rat**Applications:**

Predicted MW: 60kd

WB: 1:500~1:2000

IHC: 1:50-200



Western blot analysis of Akt2 phosphorylation expression in TNF- α treated A2780 whole cell lysates. The lane on the left is treated with the antigen-specific peptide.

Background :

Akt2 an AGC kinase. Plays critical roles in glucose metabolism and the development or maintenance of proper adipose tissue and islet mass for which other Akt/PKB isoforms are unable to fully compensate.