



APLF Antibody

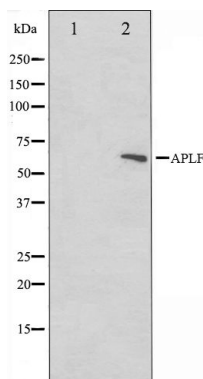
#24132

Catalog Number: 24132-1, 24132-2**Amount:** 50µg/50µl, 100µg/100µl**Swiss-Prot No. :** Q8IW19**Form of Antibody:** Rabbit IgG in phosphate buffered saline (without Mg²⁺ and Ca²⁺), pH 7.4, 150mM NaCl, 0.02% sodium azide and 50% glycerol.**Storage/Stability:** Store at -20°C/1 year**Immunogen:** The antiserum was produced against synthesized peptide derived from Human APLF**Purification:** The antibody was affinity-purified from rabbit antiserum by affinity-chromatography using epitope-specific immunogen.**Specificity/Sensitivity:** APLF antibody detects endogenous levels of total APLF protein**Reactivity:** Human, Mouse**Applications:**

Predicted MW: 57kd

WB: 1:500~1:2000

IHC: 1:50-200



Western blot analysis on rat heart cell lysate using APLF Antibody

Background :

APLF Nuclease involved in single-strand and double-strand DNA break repair. Recruited to sites of DNA damage through interaction with poly(ADP-ribose), a polymeric post-translational modification synthesized transiently at sites of chromosomal damage to accelerate DNA strand break repair reactions. Displays apurinic- apyrimidinic (AP) endonuclease and 3'-5' exonuclease activities in vitro. Also able to introduce nicks at hydroxyuracil and other types of pyrimidine base damage. Belongs to the APLF family. Interacts with LIG4, PARP1, XRCC1, XRCC4 and XRCC5.