



AKT1 (Phospho-Ser124) Antibody

#14123

Catalog Number: 14123-1, 14123-2

Amount: 50µg/50µl, 100µg/100µl

Swiss-Prot No. : P31749

Form of Antibody: Rabbit IgG in phosphate buffered saline (without Mg²⁺ and Ca²⁺), pH 7.4, 150mM NaCl, 0.02% sodium azide and 50% glycerol.

Storage/Stability: Store at -20°C/1 year

Immunogen: The antiserum was produced against synthesized phosphopeptide derived from Human AKT1 around the phosphorylation site of Serine 124

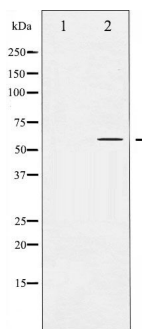
Purification: The antibody was affinity-purified from rabbit antiserum by affinity-chromatography using epitope-specific immunogen.

Specificity/Sensitivity: Phospho-AKT1 (Ser124) Antibody detects endogenous levels of AKT1 only when phosphorylated at Serine 124

Reactivity: Human, Mouse, Rat

Applications:

Predicted MW: 60kd WB:1:500~1:2000 IHC:1:50-200



Western blot analysis of Akt phosphorylation expression in Mouse brain tissue lysates. The lane on the left is treated with the antigen-specific peptide.

Background : an AGC kinase that plays a critical role in controlling the balance between survival and AP0ptosis. Phosphorylated and activated by PDK1 in the PI3 kinase pathway. Mediates survival signals downstream of PI3 kinase and several growth factor receptors by phosphorylating AP0pototic proteins. First found in a mouse transforming retrovirus. Tumorigenic in a mouse lymphoma model and activated (by phospho-Akt staining) and/or overexpressed in a number of cancers including breast, prostate, lung, pancreatic, liver, ovarian and colorectal. Inhibitor: RX-0201. Substrates include tuberlin, Bad, Forkhead transcription factors, caspase-9, and glycogen synthase kinase-3.