



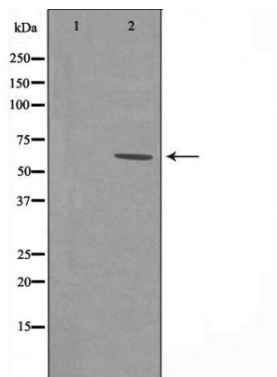
## LAT3 Antibody

#24114

**Catalog Number:** 24114-1, 24114-2**Amount:** 50µg/50µl, 100µg/100µl**Swiss-Prot No. :** O75387**Form of Antibody:** Rabbit IgG in phosphate buffered saline (without Mg<sup>2+</sup> and Ca<sup>2+</sup>), pH 7.4, 150mM NaCl, 0.02% sodium azide and 50% glycerol.**Storage/Stability:** Store at -20°C/1 year**Immunogen:** The antiserum was produced against synthesized peptide derived from Human LAT3**Purification:** The antibody was affinity-purified from rabbit antiserum by affinity-chromatography using epitope-specific immunogen.**Specificity/Sensitivity:** LAT3 antibody detects endogenous levels of total LAT3 protein**Reactivity:** Human**Applications:**

Predicted MW: 61kd

WB: 1:500~1:1000



Western blot analysis of extracts from Jurkat cells and A549 cells, using LAT3 antibody.

**Background :**