



WNK1 Antibody

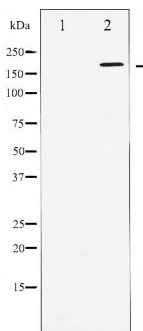
#24112

Catalog Number: 24112-1, 24112-2**Amount:** 50µg/50µl, 100µg/100µl**Swiss-Prot No. :** Q9H4A3**Form of Antibody:** Rabbit IgG in phosphate buffered saline (without Mg²⁺ and Ca²⁺), pH 7.4, 150mM NaCl, 0.02% sodium azide and 50% glycerol.**Storage/Stability:** Store at -20°C/1 year**Immunogen:** The antiserum was produced against synthesized peptide derived from Human WNK1**Purification:** The antibody was affinity-purified from rabbit antiserum by affinity-chromatography using epitope-specific immunogen.**Specificity/Sensitivity:** WNK1 antibody detects endogenous levels of total WNK1 protein**Reactivity:** Human, Mouse, Rat**Applications:**

Predicted MW: 230kd

WB: 1:500~1:2000

IHC: 1:50-200



Western blot analysis of WNK1 expression in EGF treated 293 whole cell lysates, The lane on the left is treated with the antigen-specific peptide

Background :

WNK1 a serine-threonine protein kinase that controls sodium and chloride ion transport. May regulate the activity of the thiazide-sensitive Na-Cl cotransporter SLC12A3 by phosphorylation. May also play a role in actin cytoskeletal reorganization.