

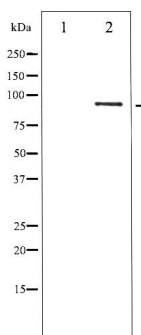


STAT5B (Phospho-Ser731) Antibody

#14112

Catalog Number: 14112-1, 14112-2**Amount:** 50µg/50µl, 100µg/100µl**Swiss-Prot No. :** P51692**Form of Antibody:** Rabbit IgG in phosphate buffered saline (without Mg²⁺ and Ca²⁺), pH 7.4, 150mM NaCl, 0.02% sodium azide and 50% glycerol.**Storage/Stability:** Store at -20°C/1 year**Immunogen:** The antiserum was produced against synthesized phosphopeptide derived from Human STAT5B around the phosphorylation site of Serine731**Purification:** The antibody was affinity-purified from rabbit antiserum by affinity-chromatography using epitope-specific immunogen.**Specificity/Sensitivity:** STAT5B (Phospho-Ser731) Antibody detects endogenous levels of STAT5B only when phosphorylated at Serine 731**Reactivity:** Human, Mouse, Rat**Applications:**

redicted MW: 90kd WB:1:500~1:2000 IHC:1:50-200



Western blot analysis of STAT5B phosphorylation expression in RAW264.7 whole cell lysates. The lane on the left is treated with the antigen-specific peptide.

Background :

The protein encoded by this gene is a member of the STAT family of transcription factors. In response to cytokines and growth factors, STAT family members are phosphorylated by the receptor associated kinases, and then form homo- or heterodimers that translocate to the cell nucleus where they act as transcription activators. This protein mediates the signal transduction triggered by various cell ligands, such as IL2, IL4, CSF1, and different growth hormones.