



Stathmin1 (Phospho-Ser15) Antibody

#14103

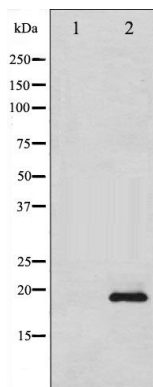
Catalog Number: 14103-1, 14103-2**Amount:** 50µg/50µl, 100µg/100µl**Swiss-Prot No. :** P16949**Form of Antibody:** Rabbit IgG in phosphate buffered saline (without Mg²⁺ and Ca²⁺), pH 7.4, 150mM NaCl, 0.02% sodium azide and 50% glycerol.**Storage/Stability:** Store at -20°C/1 year**Immunogen:** The antiserum was produced against synthesized phosphopeptide derived from Human Stathmin 1 around the phosphorylation site of Serine 15**Purification:** The antibody was affinity-purified from rabbit antiserum by affinity-chromatography using epitope-specific immunogen.**Specificity/Sensitivity:** Stathmin 1 (Phospho-Ser15) Antibody detects endogenous levels of Stathmin 1 only when phosphorylated at Serine 15**Reactivity:** Human, Mouse, Rat**Applications:**

Predicted MW: 19kd

WB: 1:500~1:2000

IHC: 1:50-200

IF/ICC: 1:100-500



Western blot analysis of Stathmin 1 phosphorylation expression in 293 whole cell lysates. The lane on the left is treated with the antigen-specific peptide.

Background :

This gene belongs to the stathmin family of genes. It encodes a ubiquitous cytosolic phosphoprotein proposed to function as an intracellular relay integrating regulatory signals of the cellular environment.