

**Signalway**

STEAP3 Antibody

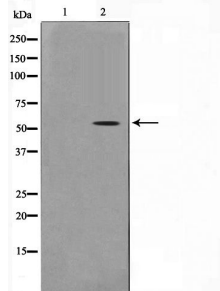
#24109

Catalog Number: 24109-1, 24109-2**Amount:** 50µg/50µl, 100µg/100µl**Swiss-Prot No. :** Q658P3**Form of Antibody:** Rabbit IgG in phosphate buffered saline (without Mg²⁺ and Ca²⁺), pH 7.4, 150mM NaCl, 0.02% sodium azide and 50% glycerol.**Storage/Stability:** Store at -20°C/1 year**Immunogen:** The antiserum was produced against synthesized peptide derived from Human STEAP3**Purification:** The antibody was affinity-purified from rabbit antiserum by affinity-chromatography using epitope-specific immunogen.**Specificity/Sensitivity:** STEAP3 antibody detects endogenous levels of total STEAP3 protein**Reactivity:** Human, Mouse, Rat**Applications:**

Predicted MW: 72kd

WB: 1:500~1:2000

ICC/IF: 1:100-500



Western blot analysis on COLO205 cell lysate using STEAP3 Antibody

Background :

STEAP3 a multi-pass membrane protein induced directly by p53. Plays an important role in facilitating exosome secretion. Enhances secretion in the DNA damage-induced p53-dependent exosomal secretory pathway. Localizes to vesicular-like structures at the plasma membrane and around the nucleus. Highly expressed in hematopoietic tissues where it localizes to the specialized endosome. An endosomal ferrireductase required for efficient transferrin-dependent iron uptake in erythroid cells. Participates in erythroid iron homeostasis by reducing Fe(3+) to Fe(2+). Can also reduce of Cu(2+) to Cu(1+), suggesting that it participates in copper homeostasis. Uses NAD(+) as acceptor.