



## E-Cadherin

### Mouse monoclonal Antibody

#53815

**Catalog Number:** 53815

**Amount:** 100µg/100µl

**Swiss-Prot No. :** P12830

**Gene name:** cdh1

**Gene id:** 999

**Clone Number:** 6B10-F4-G10

**Form of Antibody:** Purified mouse monoclonal in buffer containing 0.1M Tris-Glycine (pH 7.4, 150 mM NaCl) with 0.2% sodium azide, 50% glycerol

**Storage/Stability:** Store at -20°C/1 year

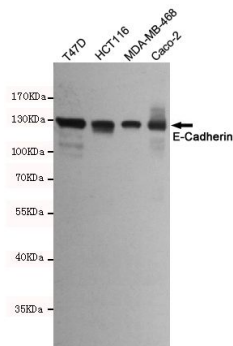
**Immunogen:** Purified recombinant human E-Cadherin protein fragments expressed in E.coli

**Purification:** affinity-chromatography

**Specificity/Sensitivity:** This antibody detects endogenous levels of E-Cadherin and does not cross-react with related proteins

**Reactivity:** Human

**Applications:** Predicted MW: 135kd WB: 1:2000



Western blot detection of E-Cadherin in T47D, HCT116, MDA-MB-468 and Caco-2 cell lysates using E-Cadherin mouse mAb (dilution 1:2000). Predicted band size: 135kDa. Observed band size: 135kDa.

### Background:

This gene is a classical cadherin from the cadherin superfamily. The encoded protein is a calcium dependent cell-cell adhesion glycoprotein comprised of five extracellular cadherin repeats, a transmembrane region and a highly conserved cytoplasmic tail. Mutations in this gene are correlated with gastric, breast, colorectal, thyroid and ovarian cancer. Loss of function is thought to contribute to progression in cancer by increasing proliferation, invasion, and/or metastasis. The ectodomain of this protein mediates bacterial adhesion to mammalian cells and the cytoplasmic domain is required for internalization. Identified transcript variants arise from mutation at consensus splice sites.