



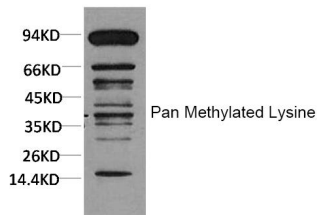
Pan Methylated Lysine

Mouse monoclonal Antibody

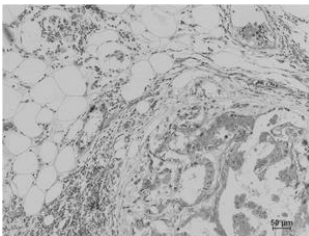
#55230

Catalog Number: 55230**Amount:** 100µg/100µl**Swiss-Prot No. :****GENE ID:****Form of Antibody:** Purified mouse monoclonal in buffer containing 0.1M Tris-Glycine (pH 7.4, 150 mM NaCl) with 0.2% sodium azide, 50% glycerol**Storage/Stability:** Store at -20°C/1 year**Purification:** affinity-chromatography**Specificity/Sensitivity:** This antibody detects endogenous levels of Pan Methylated Lysine and does not cross-react with related proteins**AlternativeNames:****Reactivity:** ALL**Applications:**

Predicted MW: WB:1:1000-2000 IHC:1:200 -500



Western blot analysis of Hela using Pan Methylated Lysine Monoclonal Antibody(MIX).



Immunohistochemical analysis of paraffin-embedded Human Breast Carcinoma using Pan Methylated Lysine Monoclonal Antibody.

Background: