



## Src (Ab-529) Antibody

#21168

**Catalog Number:** 21168-1, 21168-2

**Amount:** 50µg/50µl, 100µg/100µl

**Swiss-Prot No. :** P12931

**Form of Antibody:** Rabbit IgG in phosphate buffered saline (without Mg<sup>2+</sup> and Ca<sup>2+</sup>), pH 7.4, 150mM NaCl, 0.02% sodium azide and 50% glycerol.

**Storage/Stability:** Store at -20°C/1 year

**Immunogen:** The antiserum was produced against synthesized non-phosphopeptide derived from human Src around the phosphorylation site of tyrosine 529 (P-Q-Y<sup>P</sup>-Q-P).

**Purification:** The antibody was affinity-purified from rabbit antiserum by affinity-chromatography using epitope-specific immunogen.

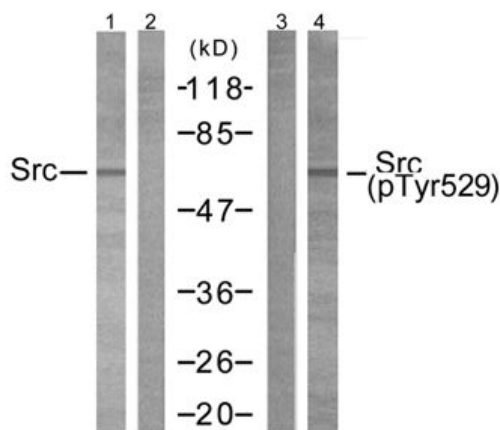
**Specificity/Sensitivity:** Src(Ab-529) antibody detects endogenous levels of total Src protein.

**Reactivity:** Human, Mouse, Rat

### Applications:

Predicted MW: 60 kd

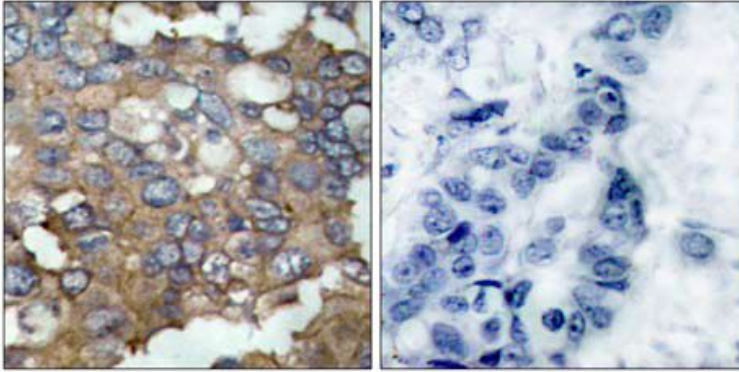
WB: 1:500~1:1000 IHC: 1:50~1:100



EGF+serum -- + -

Peptide - + - -

Western blot analysis of extracts from 293 cells using Src (Ab-529) antibody (#21168, Lane 1 and 2) and Src (phospho-Tyr529) antibody (#11153, Lane 3 and 4).



Peptide - +

Immunohistochemical analysis of paraffin- embedded  
human lung carcinoma tissue using Src (Ab-529) antibody (#21168).

**Background :**

proto-oncogenic cytoplasmic tyrosine kinase of the SRC family. Highly expressed in certain fully differentiated cells such as neurons, platelets and macrophages. Phosphorylation of an activation loop tyrosine activates the enzyme; phosphorylation of a tyrosine in the C-terminus by Csk inhibits the enzyme.

**References:**

- .Pyper J.M., (1985) Mol. Cell. Biol. 5:831-838 Pyper J.M.(1990) Mol. Cell. Biol. 10:2035-2040  
Pyper J.M.(1990) Mol. Cell. Biol. 10:2035-2040  
Xu W., (1997).Nature 385:595-602  
Benes C.H., (2005) Cell 121:271-280