



BCL-XL (Ab-62) Antibody

#21061

Catalog Number: 21061-1, 21061-2

Amount: 50 µg/50 µl, 100 µg/100 µl

Swiss-Prot No. : Q07817

Form of Antibody: Rabbit IgG in phosphate buffered saline (without Mg²⁺ and Ca²⁺), pH 7.4, 150mM NaCl, 0.02% sodium azide and 50% glycerol.

Storage/Stability: Store at -20°C/1 year

Immunogen: The antiserum was produced against synthesized non-phosphopeptide derived from human BCL-XL around the phosphorylation site of serine 62 (A-D-S^P-P-A).

Purification: The antibody was affinity-purified from rabbit antiserum by affinity-chromatography using epitope-specific immunogen

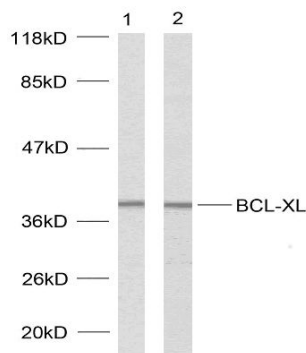
Specificity/Sensitivity: BCL-XL (Ab-62) antibody detects endogenous levels of total BCL-XL protein

Reactivity: Human, Mouse, Rat

Applications:

Predicted MW: 30kd

WB: 1:500~1:1000



293 | MDA-MB-435

Western blot analysis using BCL-XL (Ab-62) antibody (#21061).

Background :

Potent inhibitor of cell death. Isoform Bcl-X(L) anti-apoptotic activity is inhibited by association with SIVA isoform 1. Inhibits activation of caspases By similarity. Appears to regulate cell death by blocking the voltage-dependent anion channel (VDAC) by binding to it and preventing the release of the caspase activator, cytochrome c, from the mitochondrial membrane. The Bcl-X(S) isoform promotes apoptosis

References:

Basu A, et.al.(2003) Mar 13; 538(1-3): 41-7

Cheng E.H.-Y. et.al. (1996) Nature 379:554-556.

Sattler M. et.al. (1997), Science 275:983-986.

Muchmore S.W.et.al (1996).Nature 381:335-341

Yu J., Zhang L. Mol. (2001)Cell 7:673-682

.