



## CDC2 (Ab-19) Antibody

#21529

**Catalog Number:** 21529-1, 21529-2

**Amount:** 50  $\mu$ g/50  $\mu$ l, 100  $\mu$ g/100  $\mu$ l

**Swiss-Prot No. :** P06493

**Form of Antibody:** Rabbit IgG in phosphate buffered saline (without  $Mg^{2+}$  and  $Ca^{2+}$ ), pH 7.4, 150mM NaCl, 0.02% sodium azide and 50% glycerol.

**Storage/Stability:** Store at  $-20^{\circ}C$ /1 year

**Immunogen:** The antiserum was produced against synthesized non-phosphopeptide derived from human CDC2 around the phosphorylation site of tyrosine 19 (V-V-YP-K-G).

**Purification:** The antibody was affinity-purified from rabbit antiserum by affinity-chromatography using epitope-specific immunogen.

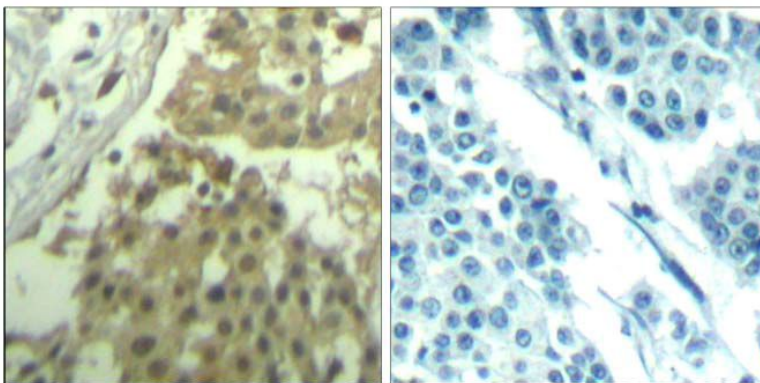
**Specificity/Sensitivity:** CDC2 (Ab-19) antibody detects endogenous levels of total CDC2 protein

**Reactivity:** Human, Rat

### Applications:

Predicted MW: 34kd

IHC: 1:50~1:100



Peptide - +

Immunohistochemical analysis of paraffin-embedded human breast carcinoma tissue using cdc2 (Ab-19) Antibody (#21529).

### **Background :**

Plays a key role in the control of the eukaryotic cell cycle. It is required in higher cells for entry into S-phase and mitosis. p34 is a component of the kinase complex that phosphorylates the repetitive C-terminus of RNA polymerase II.

### **References:**

- Hunter, T. (1995) *Cell* 80, 225-236.
- Wells, N.J. et al. (1999) *J. Cell. Sci.* 112, 3361-3371.
- McGowan, C.H. and Russell, P. (1993) *EMBO J.* 12, 75-85.