



BIM (Ab-69) Antibody

#21280

Catalog Number: 21280-1, 21280-2

Amount: 50 μ g/50 μ l, 100 μ g/100 μ l

Swiss-Prot No. : O43521

Form of Antibody: Rabbit IgG in phosphate buffered saline (without Mg^{2+} and Ca^{2+}), pH 7.4, 150mM NaCl, 0.02% sodium azide and 50% glycerol.

Storage/Stability: Store at $-20^{\circ}C$ /1 year

Immunogen: The antiserum was produced against synthesized non-phosphopeptide derived from human BIM around the phosphorylation site of serine 69 (P-A-S_P-P-G).

Purification: The antibody was affinity-purified from rabbit antiserum by affinity-chromatography using epitope-specific immunogen.

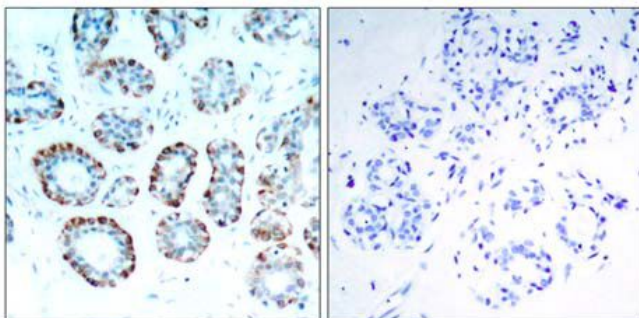
Specificity/Sensitivity: BIM (Ab-69) antibody detects endogenous levels of total BIM protein

Reactivity: Human, Mouse, Rat

Applications:

Predicted MW: 23kd

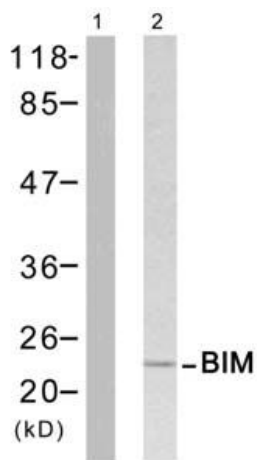
WB: 1:500~1:1000 IHC: 1:50~1:100



Peptide -

+

Immunohistochemical analysis of paraffin-embedded human breast carcinoma tissue, using BIM (Ab-69) antibody (#21280).



H₂O₂ + +

Peptide - +

Western blot analysis of extract from Jukat cells untreated

or treated with H₂O₂, using BIM (Ab-69) antibody (#21280)

Background :

Induces apoptosis. Isoform BimL is more potent than isoform BimEL. Isoform Bim-a1, isoform Bim-a2 and isoform Bim-a3 induce apoptosis, although less potent than the isoforms BimEL, BimL and BimS. Isoform Bim-gamma induces apoptosis

References:

.Fukazawa H, et al. (2004) Mol Cancer Ther ; 3(10): 1281-1288

Luciano F, et al. (2003) Oncogene ; 22(43): 6785-6793