



## CDC2 (Ab-15) Antibody

#21236

**Catalog Number:** 21236-1, 21236-2

**Amount:** 50  $\mu$ g/50  $\mu$ l, 100  $\mu$ g/100  $\mu$ l

**Swiss-Prot No. :** P06493

**Form of Antibody:** Rabbit IgG in phosphate buffered saline (without  $Mg^{2+}$  and  $Ca^{2+}$ ), pH 7.4, 150mM NaCl, 0.02% sodium azide and 50% glycerol.

**Storage/Stability:** Store at  $-20^{\circ}C$ /1 year

**Immunogen:** The antiserum was produced against synthesized non-phosphopeptide derived from human CDC2 around the phosphorylation site of tyrosine 15 (G-T-Yp-G-V)..

**Purification:** The antibody was affinity-purified from rabbit antiserum by affinity-chromatography using epitope-specific immunogen.

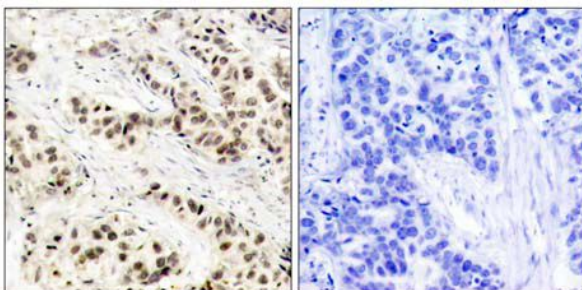
**Specificity/Sensitivity:** CDC2 (Ab-15) antibody detects endogenous levels of total CDC2 protein

**Reactivity:** Human, Mouse, Rat

### Applications:

Predicted MW: 34kd

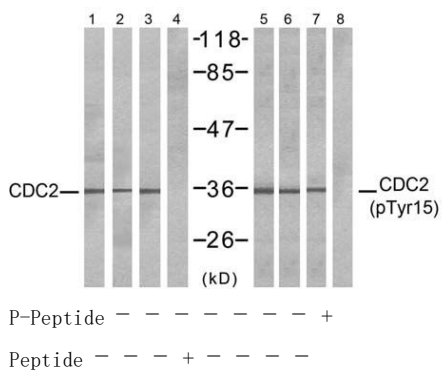
WB: 1:500~1:1000 IHC: 1:50~1:100 IF:1:100~1:200



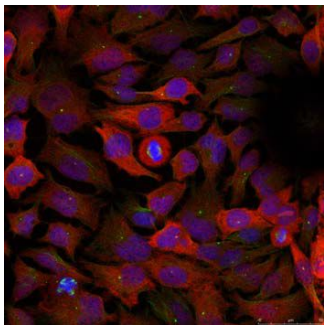
Peptide      -                                      +

Immunohistochemical analysis of paraffin-embedded human breast carcinoma tissue,

using CDC2 (Ab-15) antibody(#21236).



Western blot analysis of extracts from COL0 (Lane 1, 5) and HepG2 (Lane 2, 6) and K562 (Lane 3, 4, 7, 8) cells, using CDC2 (Ab-15) antibody (#21236, Lane 1, 2, 3 and 4) and CDC2 (phospho-Tyr15) antibody (#11244, Lane 5, 6, 7 and 8).



Immunofluorescence staining of methanol-fixed HeLa cells using CDC2 (Ab-15) antibody (#21236, Red).

### Background :

Plays a key role in the control of the eukaryotic cell cycle. It is required in higher cells for entry into S-phase and mitosis. p34 is a component of the kinase complex that phosphorylates the repetitive C-terminus of RNA polymerase II.

### References:

Y Gu, et al. (1992) EMBO J. 11(11): 3995