



BCL-2 (Ab-70) Antibody

#21060

Catalog Number: 21060-1, 21060-2

Amount: 50 µg/50 µl, 100 µg/100 µl

Swiss-Prot No. : P10415

Form of Antibody: Rabbit IgG in phosphate buffered saline (without Mg²⁺ and Ca²⁺), pH 7.4, 150mM NaCl, 0.02% sodium azide and 50% glycerol.

Storage/Stability: Store at -20°C/1 year

Immunogen: The antiserum was produced against synthesized non-phosphopeptide derived from human BCL-2 around the phosphorylation site of serine 70 (R-T-Sp-P-L).

Purification: The antibody was affinity-purified from rabbit antiserum by affinity-chromatography using epitope-specific immunogen.

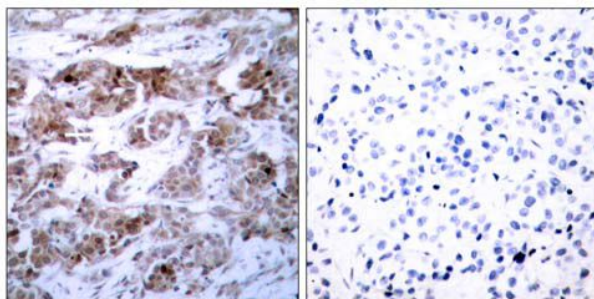
Specificity/Sensitivity: BCL-2 (Ab-70) antibody detects endogenous levels of total BCL-2 protein

Reactivity: Human

Applications:

Predicted MW: 26kd

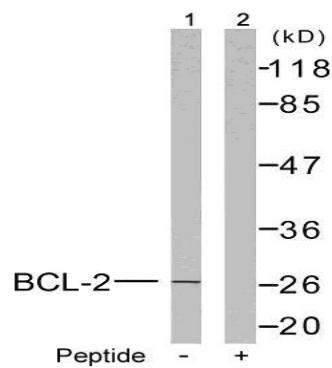
WB: 1:500~1:1000 IHC: 1:50-1:100 IF:1:100-1:200



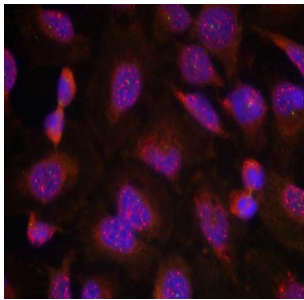
Peptide - +

Immunohistochemical analysis of paraffin-embedded human breast carcinoma tissue using BCL-2 (Ab-70)

antibody (#21060).



Western blot analysis of extracts from MCF7 cells treated with etoposide using BCL-2 (Ab-70) antibody (#21060).



Immunofluorescence staining of methanol-fixed HeLa cells using BCL-2 (Ab-70) antibody (#21060, Red).

Background

Suppresses apoptosis in a variety of cell systems including factor-dependent lymphohematopoietic and neural cells. Regulates cell death by controlling the mitochondrial membrane permeability. Appears to function in a feedback loop system with caspases. Inhibits caspase activity either by preventing the release of cytochrome c from the mitochondria and/or by binding to the apoptosis-activating factor (APAF-1).

References:

- Muller IM, et al. (2005) Mol Pharmacol.
- Jin Z, Gao F, et al. J Biol Chem 2004 Sep 17; 279(38): 40209-19.
- Kumar Biswas S, et al. Mol Cancer Ther 2004 Mar; 3(3): 327-34.
- Huang ST, et al. (2002)FASEB J; 16(8): 825-32.
- Yamamoto K, et al. (1999) Mol Cell Biol; 19(12): 8469-78.