



## BAD (Ab-136) Antibody

#21063

**Catalog Number:** 21063-1, 21063-2

**Amount:** 50  $\mu$ g/50  $\mu$ l, 100  $\mu$ g/100  $\mu$ l

**Swiss-Prot No. :** Q61377

**Form of Antibody:** Rabbit IgG in phosphate buffered saline (without  $Mg^{2+}$  and  $Ca^{2+}$ ), pH 7.4, 150mM NaCl, 0.02% sodium azide and 50% glycerol.

**Storage/Stability:** Store at  $-20^{\circ}C$ /1 year

**Immunogen:** The antiserum was produced against synthesized non-phosphopeptide derived from mouse BAD around the phosphorylation site of serine136 (S-R-S<sub>P</sub>-A-P).

**Purification:** The antibody was affinity-purified from rabbit antiserum by affinity-chromatography using epitope-specific immunogen.

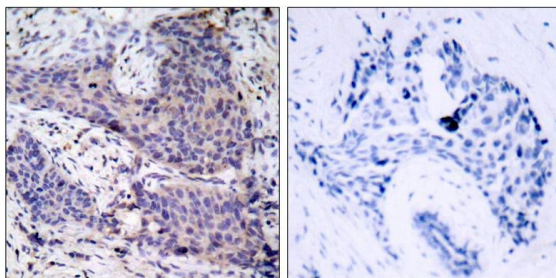
**Specificity/Sensitivity:** BAD (Ab-136) antibody detects endogenous levels of total BAD protein

**Reactivity:** Human, Mouse, Rat

### Applications:

Predicted MW: 23kd

WB: 1:500~1:1000 IHC: 1:50-1:100



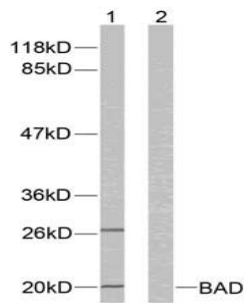
Peptide

-

+

Immunohistochemical analysis of paraffin- embedded

human breast carcinoma tissue using BAD (Ab-136) antibody (#21063).



Forskolin + +

Peptide - +

Western blot analysis of extracts from 293 cells using  
BAD (Ab-136) antibody (#21063).

## Background

The protein encoded by BAD gene is a member of the BCL-2 family. BCL-2 family members are known to be regulators of programmed cell death. This protein positively regulates cell apoptosis by forming heterodimers with BCL-xL and BCL-2, and reversing their death repressor activity. Proapoptotic activity of this protein is regulated through its phosphorylation. Protein kinases AKT and MAP kinase, as well as protein phosphatase calcineurin were found to be involved in the regulation of this protein. Alternative splicing of this gene results in two transcript variants which encode the same isoform.

## References:

- Wang XQ, et al. (2001). J Biol Chem. 276 (48): 44504-44511.  
Lee YI, et al. (2001). J Biol Chem. 276 (20): 16969-16977.  
Maiti D, et al. (2001). J Biol Chem. 276 (1): 329-333.