



AFX (Ab-197) Antibody

#21162

Catalog Number: 21162-1, 21162-2

Amount: 50 μ g/50 μ l, 100 μ g/100 μ l

Swiss-Prot No. : P98177

Form of Antibody: Rabbit IgG in phosphate buffered saline (without Mg^{2+} and Ca^{2+}), pH 7.4, 150mM NaCl, 0.02% sodium azide and 50% glycerol.

Storage/Stability: Store at $-20^{\circ}C$ /1 year

Immunogen: The antiserum was produced against synthesized phosphopeptide derived from human AFX around the phosphorylation site of serine 197 (A-A-S_P-M-D).

Purification: The antibody was affinity-purified from rabbit antiserum by affinity-chromatography using epitope-specific immunogen.

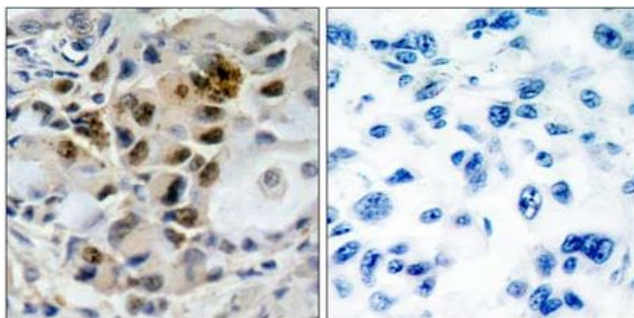
Specificity/Sensitivity: AFX (Ab-197) antibody detects endogenous levels of total AFX protein.

Reactivity: Human, Mouse, Rat

Applications:

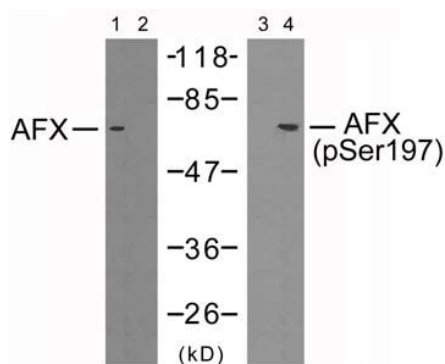
Predicted MW: 65kd

WB: 1:500~1:1000 IHC: 1:50-1:100



Peptide - +

Immunohistochemical analysis of paraffin-embedded human lung carcinoma tissue, using AFX (Ab-197) antibody (#21162).



serum	-	-	-	+
Peptide	-	+	-	-

Western blot analysis of extracts from 293 cells using AFX (Ab-197) antibody (#21162, Lane 1 and 2) and AFX (phospho-Ser197) antibody (#11137, Lane 3 and 4).

Background

Transcription factor involved in the regulation of the insulin signaling pathway. Binds to insulin-response elements (IREs) and can activate transcription of IGFBP1. Down-regulates expression of HIF1A and suppresses hypoxia-induced transcriptional activation of HIF1A-modulated genes. Also involved in negative regulation of the cell cycle.

References:

- Di Maira G, et al. (2005) Cell Death Differ; 12(6): 668-77.
- Essers MA, et al. EMBO J 2004 Nov. 11.
- Brownawell AM, (2001) Mol Cell Biol; 21(10): 3534-46.
- Kops GJ, et al. (1999) Nature; 398(6728): 630-4.