



p70 S6 Kinase (Phospho-Thr421) Antibody

#11254

Catalog Number: 11254-1, 11254-2

Amount: 50µg/50µl, 100µg/100µl

Swiss-Prot No. : P23443

Form of Antibody: Rabbit IgG in phosphate buffered saline (without Mg²⁺ and Ca²⁺), pH 7.4, 150mM NaCl, 0.02% sodium azide and 50% glycerol.

Storage/Stability: Store at -20°C/1 year

Immunogen: The antiserum was produced against synthesized phosphopeptide derived from human p70 S6 Kinase around the phosphorylation site of threonine 421 (P-R-T_P-P-V).

Purification: The antibody was affinity-purified from rabbit antiserum by affinity-chromatography using epitope-specific phosphopeptide. The antibody against non-phosphopeptide was removed by chromatography using non-phosphopeptide corresponding to the phosphorylation site.

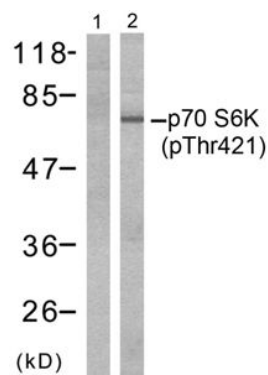
Specificity/Sensitivity: p70 S6 Kinase (phospho-Thr421) antibody detects endogenous levels of p70 S6 Kinase only when phosphorylated at threonine 421

Reactivity: Human, Mouse, Rat

Applications:

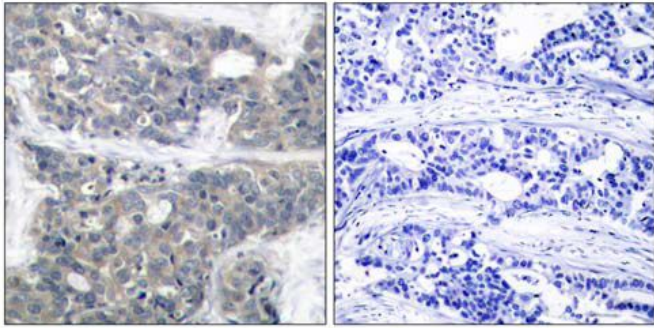
Predicted MW: 70 85 kd

WB: 1:500~1:1000 IHC: 1:50-1:100 IF: 1:100~1:200



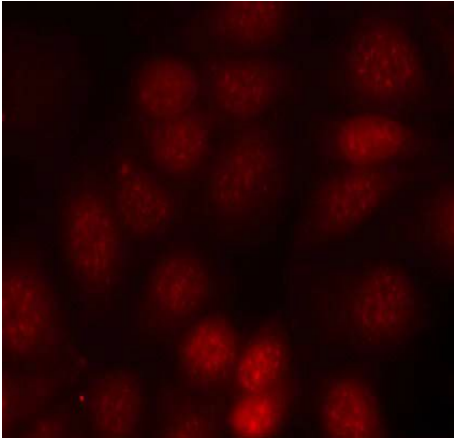
GM-CSF - +

Western blot analysis of extracts from Jurkat cells, untreated or treated with GM-CSF (25ng/ml 30min) using p70 S6 Kinase (phospho-Thr421) antibody (#11254, Line 1 and 2)



P-Peptide - +

Immunohistochemical analysis of paraffin-embedded human breast carcinoma tissue using p70 S6 Kinase (Phospho-Thr421) antibody (#11254).



Immunofluorescence staining of methanol-fixed MCF7 cells using p70 S6 Kinase (phospho-Thr421) antibody (#11254, Red).

Background :

Phosphorylates specifically ribosomal protein S6 in response to insulin or several classes of mitogens. Promotes protein synthesis by phosphorylating PDCD4 at 'Ser-67' and targeting it for degradation

References:

- Xiao-Feng, et al. (2003) Le1 30 Volume 22: 484-497
- An WL, et al. (2003) Am J Pathol. 163(2): 591-607.
- Le XF, et al. (2003) Oncogene.22(4): 484-97