



p70 S6 Kinase (Ab-424) Antibody

#21276

Catalog Number: 21276-1, 21276-2

Amount: 50µg/50µl, 100µg/100µl

Swiss-Prot No. : P23443

Form of Antibody: Rabbit IgG in phosphate buffered saline (without Mg²⁺ and Ca²⁺), pH 7.4, 150mM NaCl, 0.02% sodium azide and 50% glycerol.

Storage/Stability: Store at -20°C/1 year

Immunogen: The antiserum was produced against synthesized non-phosphopeptide derived from human p70 S6 Kinase around the phosphorylation site of serine 424 (P-V-S_P-P-V).

Purification: The antibody was affinity-purified from rabbit antiserum by affinity-chromatography using epitope-specific immunogen

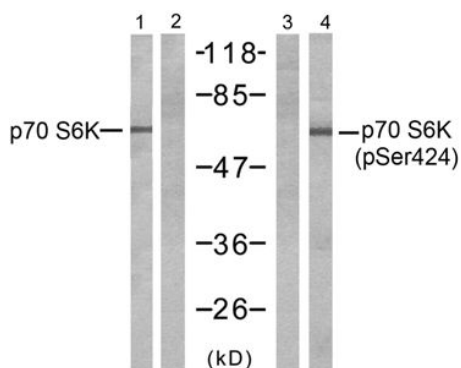
Specificity/Sensitivity: p70 S6 Kinase (Ab-424) antibody detects endogenous levels of total p70 S6 Kinase protein

Reactivity: Human, Mouse, Rat

Applications:

Predicted MW: 70 85 kd

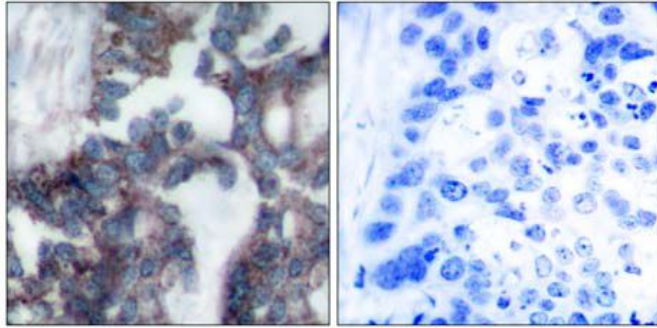
WB: 1:500~1:1000 IHC: 1:50-1:100 IF: 1:100~1:200



Serum + + - +

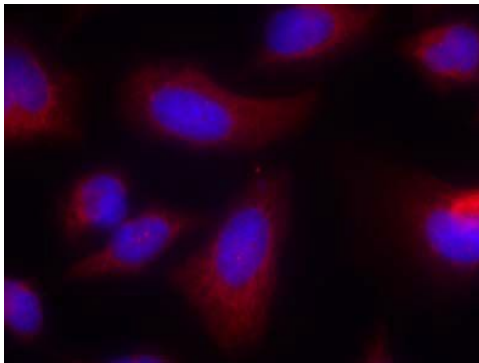
Peptide - + - -

Western blot analysis of extracts from 293 cells, untreated or treated with serum (10%, 10min), using p70 S6 Kinase (Ab-424) antibody (#21276, Line 1 and 2) and p70 S6 Kinase (phospho-Ser424) antibody (#11284, Line 3 and 4).



Peptide - +

Immunohistochemical analysis of paraffin-embedded human breast carcinoma tissue using p70 S6 Kinase (Ab-424) antibody (#21276).



Immunofluorescence staining of methanol-fixed HeLa cells using p70 S6 Kinase (Ab-424) antibody (#21276, Red).

Background :

Phosphorylates specifically ribosomal protein S6 in response to insulin or several classes of mitogens. Promotes protein synthesis by phosphorylating PDCD4 at 'Ser-67' and targeting it for degradation

References:

- Satoru Eguchi et al. (1999) J Biol Chem, Vol. 274: 36843-36851
Papst PJ, et al. (1998) J Biol Chem. 273(24):15077-84.
Ulrike Krause et al. (2002) Eur. J. Biochem. 269: 3751-3759 c
Le, X.F, et al. (2003) Oncogene 22: 484-97