



## p70 S6 Kinase (Ab-421) Antibody

#21246

**Catalog Number:** 21246-1, 21246-2

**Amount:** 50µg/50µl, 100µg/100µl

**Swiss-Prot No. :** P23443

**Form of Antibody:** Rabbit IgG in phosphate buffered saline (without Mg<sup>2+</sup> and Ca<sup>2+</sup>), pH 7.4, 150mM NaCl, 0.02% sodium azide and 50% glycerol.

**Storage/Stability:** Store at -20°C/1 year

**Immunogen:** The antiserum was produced against synthesized non-phosphopeptide derived from human p70 S6 Kinase around the phosphorylation site of threonine 421 (P-R-T<sup>P</sup>-P-V)

**Purification:** The antibody was affinity-purified from rabbit antiserum by affinity-chromatography using epitope-specific immunogen

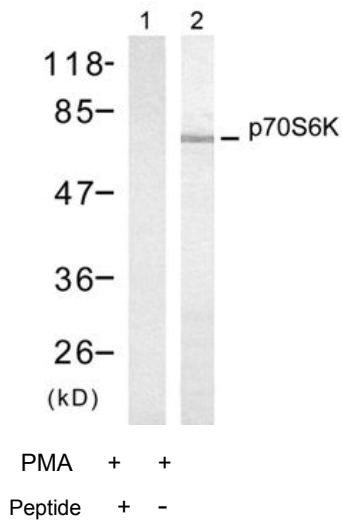
**Specificity/Sensitivity:** p70 S6 Kinase (Ab-421) antibody detects endogenous levels of total p70 S6 Kinase protein

**Reactivity:** Human, Mouse, Rat

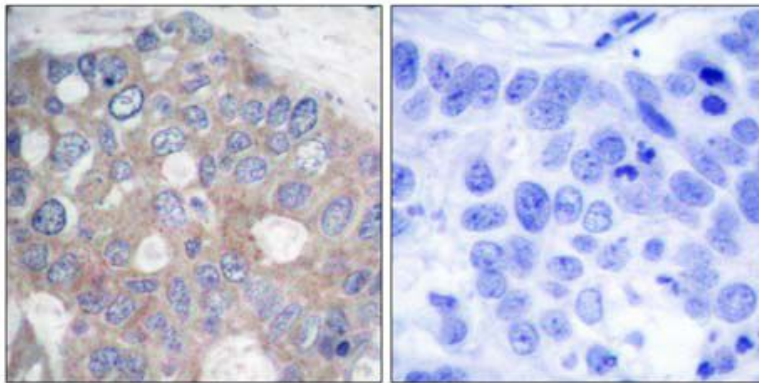
### Applications:

Predicted MW: 70 85 kd

WB: 1:500~1:1000 IHC: 1:50-1:100



Western blot analysis of extracts from 293 cells treated with PMA (200nM, 30min), using p70S6K (Ab-421) antibody (#21246).



Peptide - +

Immunohistochemical analysis of paraffin-embedded human breast carcinoma tissue using p70 S6 Kinase (Ab-421) antibody (#21246).

### Background :

Phosphorylates specifically ribosomal protein S6 in response to insulin or several classes of mitogens. Promotes protein synthesis by phosphorylating PDCD4 at 'Ser-67' and targeting it for degradation

### References:

- Xiao-Feng, et al. (2003) Le1 30 Volume 22: 484-497  
An WL, et al. (2003) Am J Pathol. 163(2): 591-607.  
Le XF, et al. (2003) Oncogene.22(4): 484-97