



## p70 S6 Kinase (Ab-411) Antibody

#21261

**Catalog Number:** 21261-1, 21261-2

**Amount:** 50µg/50µl, 100µg/100µl

**Swiss-Prot No. :** P23443

**Form of Antibody:** Rabbit IgG in phosphate buffered saline (without Mg<sup>2+</sup> and Ca<sup>2+</sup>), pH 7.4, 150mM NaCl, 0.02% sodium azide and 50% glycerol.

**Storage/Stability:** Store at -20°C/1 year

**Immunogen:** The antiserum was produced against synthesized non-phosphopeptide derived from human p70 S6 Kinase around the phosphorylation site of serine 411 (I-R-S<sub>P</sub>-P-R).

**Purification:** The antibody was affinity-purified from rabbit antiserum by affinity-chromatography using epitope-specific immunogen

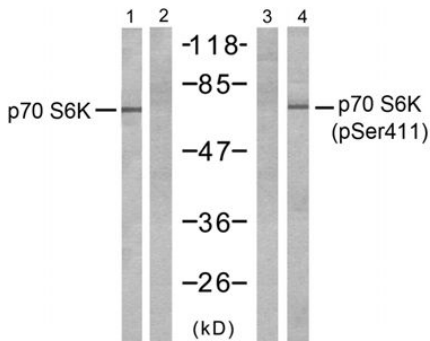
**Specificity/Sensitivity:** p70 S6 Kinase(Ab-411) antibody detects endogenous levels of total p70 S6 Kinase protein

**Reactivity:** Human, Mouse, Rat

### Applications:

Predicted MW: 70 85 kd

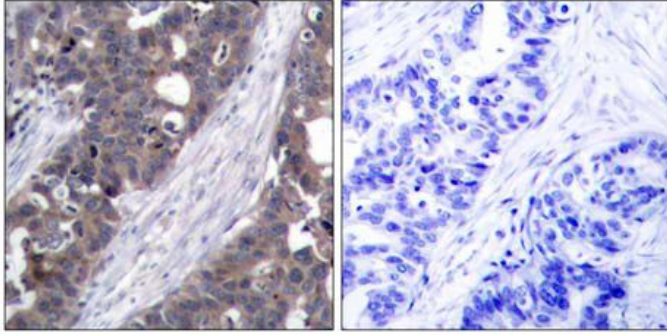
WB: 1:500~1:1000 IHC: 1:50-1:100 IF: 1:100~1:200



Insulin + + - +

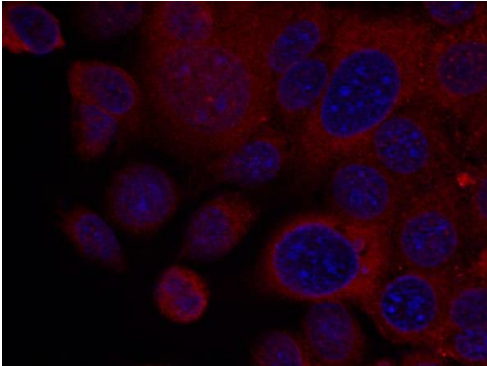
Peptide - + - -

Western blot analysis of extracts from 293 cells, untreated or treated with insulin (10µ/ml, 15min), using p70 S6 Kinase (Ab-411) antibody (#21261, Line 1 and 2) and p70 S6 Kinase (phospho-Ser411) antibody (#11269, Line 3 and 4)



Peptide - +

Immunohistochemical analysis of paraffin-embedded human breast carcinoma tissue using p70 S6 Kinase (Ab-411) antibody (#21261).



Immunofluorescence staining of methanol-fixed HeLa cells using p70 S6 Kinase (Ab-411) antibody (#21261, Red).

### Background :

Phosphorylates specifically ribosomal protein S6 in response to insulin or several classes of mitogens. Promotes protein synthesis by phosphorylating PDCD4 at 'Ser-67' and targeting it for degradation

### References:

- Satoru Eguchi et al. (1999) J Biol Chem, Vol. 274: 36843-36851
- Papst PJ, et al. (1998) J Biol Chem. 273(24):15077-84.
- Ulrike Krause et al. (2002) Eur. J. Biochem. 269: 3751-3759 c
- Le, X.F, et al. (2003) Oncogene 22: 484-97